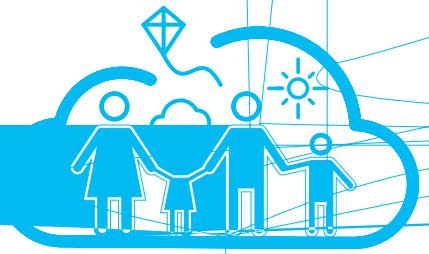


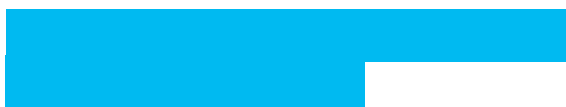
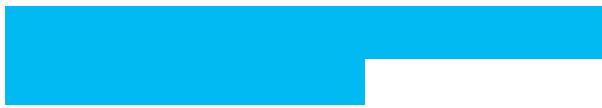
Air Quality.



athes

Is air quality worse walking and cycling than in a car?

Studies have shown that people in cars experience higher levels of pollution than those on foot or bicycle because they are in



A strong wind and no buildings can disperse air
lower the further away you are from the source



¹ https://www.researchgate.net/publication/310466891_Air_quality_inside_motor_vehicles'_cabins_A_review

² DEFRA

³ <https://www.ncbi.nlm.nih.gov/books/NBK361807/>

How does the weather affect air pollution?

Generally air pollution is worse during winter months. This is because of the 'inversion' effect where cold air gets trapped near the ground, preventing pollutants from dispersing. Additionally, people use more heating during winter, which can contribute to air pollution. Air pollution levels are generally higher during winter months.

What are the legal limits for air pollution in the UK?

The legal limits for air pollution in the UK are set by the Environment Act 2021. These limits apply to various pollutants, including particulate matter (PM₁₀ and PM_{2.5}), nitrogen dioxide (NO₂), and ozone (O₃). The limits are based on annual averages and are designed to protect public health and the environment.

What are the safe limits for air quality in the UK?

The safe limits for air quality in the UK are set by the World Health Organization (WHO). These limits are based on scientific evidence and are designed to protect public health. The WHO limits are generally lower than the legal limits in the UK.